



Borman Elementary Easement Public Access Easement

**Parks and Recreation
September 12, 2022**



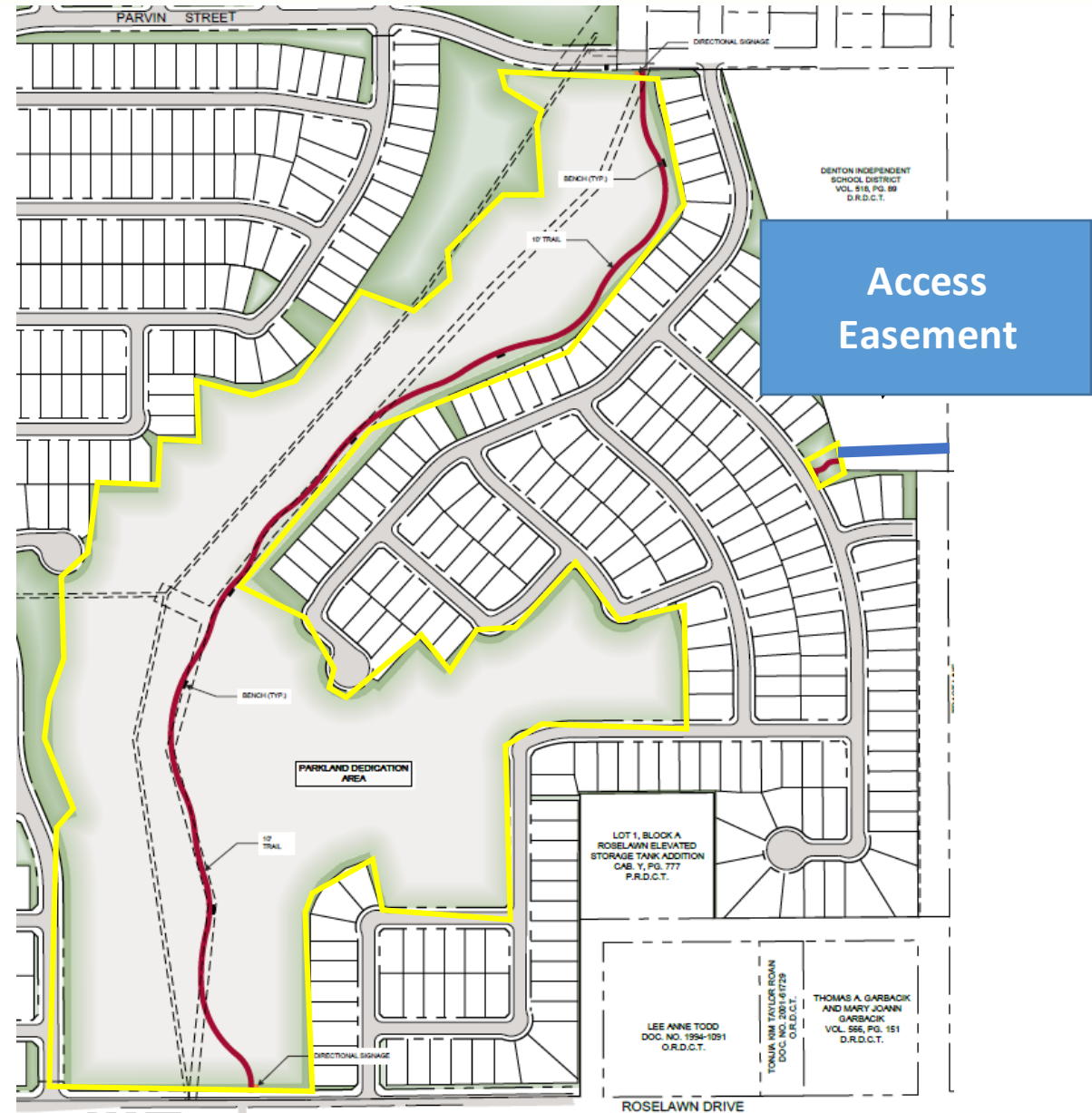
Project Details

Borman Easement – Site Information

Property Location	Development Details
<ul style="list-style-type: none"> Borman Elementary 	<ul style="list-style-type: none"> Connects Denai Park to Eagle Creek neighborhood

Easement Being Provided by DISD

Type of Land Dedication	Square Feet
Public Access Easement Acres (Non-Floodplain)	8,102



Benefits of Dedication & Development Approval

- Connecting a new neighborhood to Denia Park
- Contributes to the accomplishment of:
 - 10-minute walk campaign
 - Parks, Recreation and Trails System Master Plan
 - Denton 2040 Plan

Questions?