



# Southwest Park Master Plan

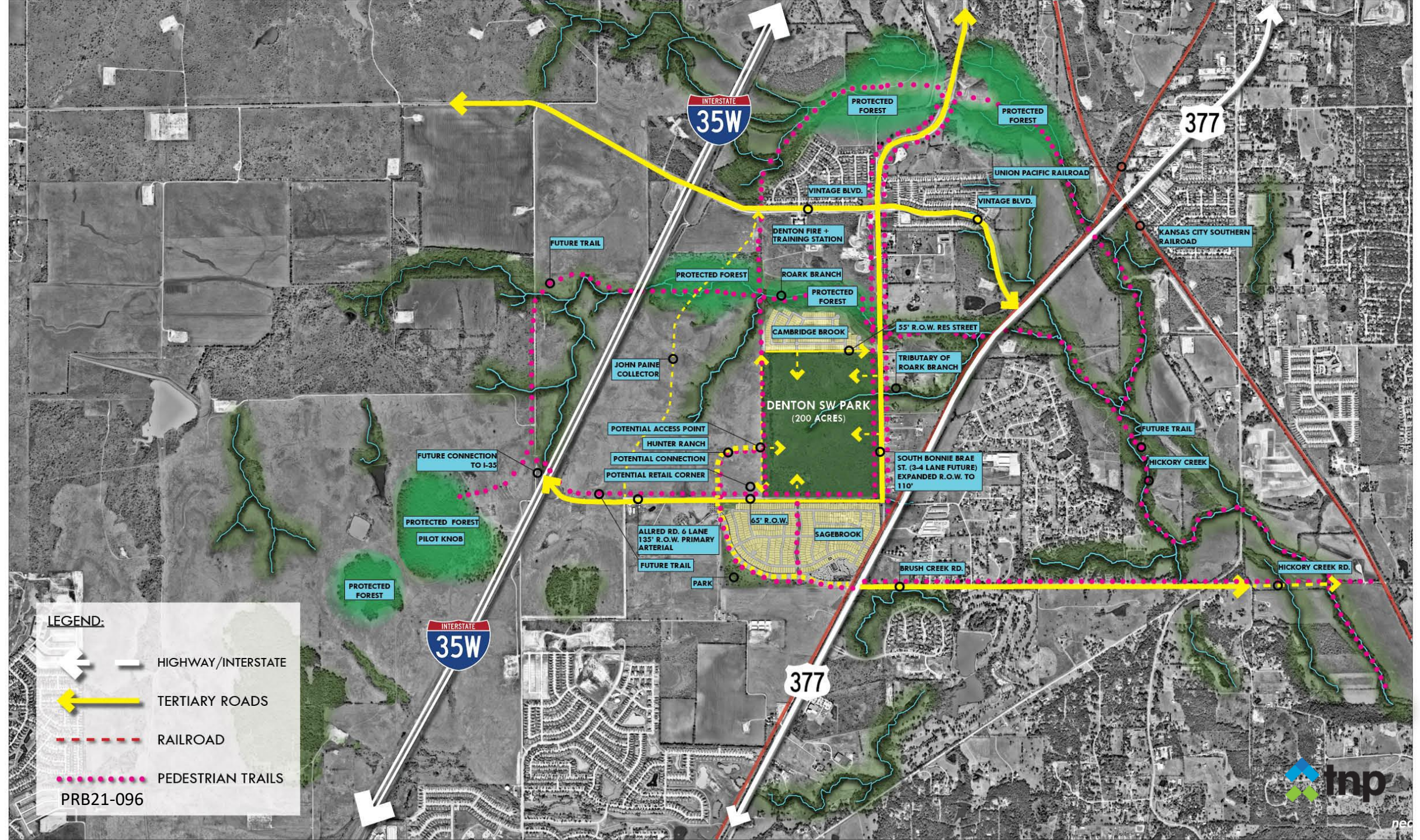
City of Denton  
Parks & Recreation Department



LEGEND:

-  HIGHWAY/INTERSTATE
-  TERTIARY ROADS
-  RAILROAD
-  PEDESTRIAN TRAILS

PRB21-096



A lush green park with a winding path, trees, and a body of water in the background. The scene is bright and sunny, with shadows cast by the trees. A group of people is walking on the path in the distance. The overall atmosphere is peaceful and natural.

# Survey Data

# COMMUNITY INPUT

## Denton Parks Recreation & Trails Master Plan Survey

- 1,300+ community survey responses pre-COVID-19
- 2,000+ community survey responses post-COVID-19

## Public input meetings (2)

- Southwest Park public meeting participants responding to an on-line survey ranking importance of activities and facilities in the webcast presentation.

## Southwest Park Focus Group meetings (2)

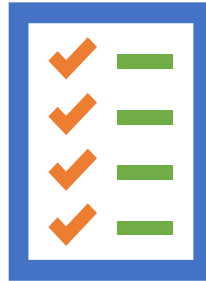
- Focus group members responding to an on-line survey ranking importance of activities and facilities in the webcast presentation.

Emails, **community meetings**, face-to-face discussions on Master Plan

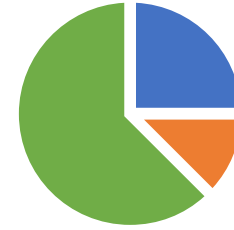


## Community Input: Outdoor Space

\*from City of Denton Focus Groups, Public Input, Surveys, and \*\*Denton Parks Recreation and Open Space Master Plan



**What we heard:** Data was collected from 1300 Survey responses from Residents, Focus Group, & Park Board



## Community Input: Indoor Space

\*from City of Denton Focus Groups, Public Input, Surveys, and \*\*Denton Parks Recreation and Open Space Master Plan

| Outdoor |                            |
|---------|----------------------------|
| 1       | Hike and Bike Trails       |
| 2       | Playgrounds                |
| 3       | Restrooms                  |
| 4       | Open Space/ Picnic         |
| 5       | Forest                     |
| 6       | Outdoor Fitness            |
| 7       | Small Amphitheater         |
| 8       | Athletic Fields            |
| 9       | Multiuse Pavilions         |
| 10      | Outdoor Learning/Adventure |

| Indoor |                                     |
|--------|-------------------------------------|
| 1      | Multigenerational Recreation Center |
|        | Indoor Walk/Jog Track               |
|        | Patios/Outdoor Spaces               |
|        | Fitness                             |
|        | Senior Programming                  |
|        | Gymnasium/sport courts              |
|        | Indoor Playground                   |
|        | Party Rooms                         |
| 2      | Indoor aquatics/ lap pool           |
| 3      | Park Maintenance Facility           |

\* Southwest Park public meeting participants and focus group members responding to an on-line survey ranking importance of activities and facilities in the webcast presentation.

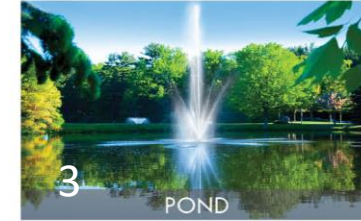
\*\* 1200+ General residential on-line facility preference surveys (collected as part of the master planning process)

# Master Plan



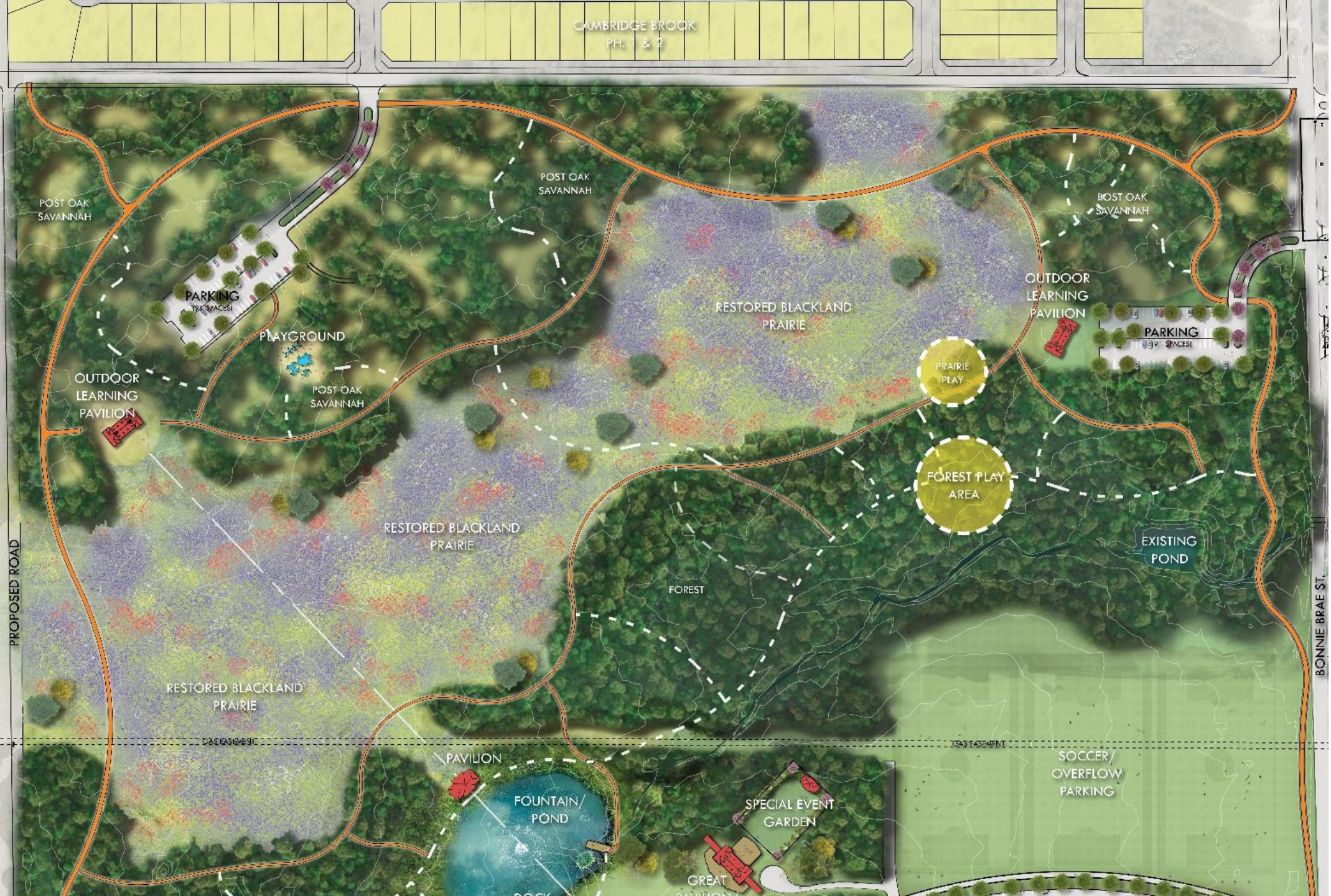
# Master Plan

- 1 – Pavilion/Amphitheater
- 2- Black land Prairie
- 3 – Pond
- 4- Monument Sign
- 5 – Nature Play
- 6- Outdoor Activities/Exercise
- 7- Outdoor Learning
- 8 – Playground
- 9 – Special Event Garden
- 10 – Trails
- 11 – Dog Park
- 12 – Baseball/Softball



# Master Plan

## North Side



CAMBRIDGE BROOK  
PH. 1 & 2

POST OAK SAVANNAH

POST OAK SAVANNAH

POST OAK SAVANNAH

PARKING  
120 SPACES

PLAYGROUND

RESTORED BLACKLAND PRAIRIE

OUTDOOR LEARNING PAVILION

PARKING  
120 SPACES

OUTDOOR LEARNING PAVILION

POST OAK SAVANNAH

PRAIRIE PLAY

FOREST PLAY AREA

RESTORED BLACKLAND PRAIRIE

EXISTING POND

PROPOSED ROAD

FOREST

RESTORED BLACKLAND PRAIRIE

PAVILION

FOUNTAIN/  
POND

SPECIAL EVENT GARDEN

SOCCER/  
OVERFLOW  
PARKING

BONNIE BRAE ST.



# Master Plan

## South Side



# Master Plan - Indoor Spaces



GYM/ FIELD HOUSE



AEROBICS STUDIO



INDOOR WALK/ JOG TRACK



LIBRARY



FITNESS CENTER



INDOOR PLAYGROUND



SPRAYGROUND



INDOOR AQUATICS



OUTDOOR SPACES

# Questions or Comments?