

USACE/Denton PARD Meeting Recap January 26, 2022

ATTENDANCE: DENTON-GARY PACKAN, DREW HUFFMAN, CHRIS ESCOTO
USACE-NICK WILSON, JOSH HOUGHTALING

Items Discussed

- Isle Dubois Overlook
- Laney Property
- Trail Connection
 - Cooper Creek Connection
 - Pecan Creek Connection
 - Hickory Creek/Old Alton Launch
- Lewisville Lake Paddling Trails

Isle Du Bois Overlook - Discussion

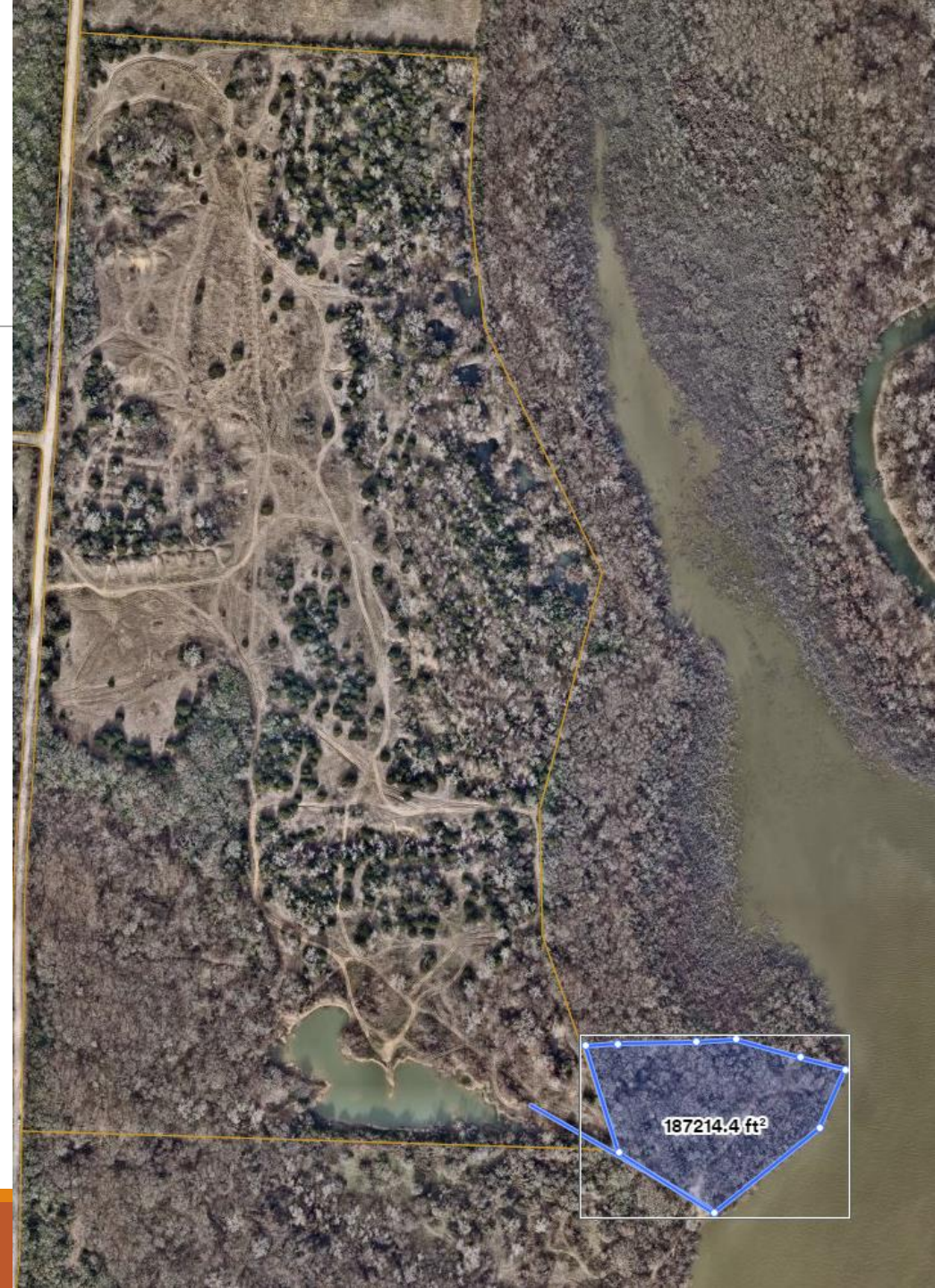
- PARD would like to re-open the overlook location, which will have paid entry, new trails, paddle launches, and enhance the beach area.
- USACE currently manages Lewisville Lake and Lake Ray Roberts. USACE has an interest in separating the two and creating an office for Lake Ray Roberts
 - PARD would want to partner with USACE to provide public bathrooms on-site.
 - Having USACE on-site will also help with monitoring of the area and will deter illegal activity.



Laney Property

The City of Denton is considering the purchase of the Laney property and is interested in partnering with USACE to gain access to additional land to the east as well as the pond

- The property is currently used for unauthorized ATV, Fishing, hunting. Illegal dumping is occurring on this site.
- Denton PARD would want to provide the following amenities on this site:
 - Local park: Playground, open space, hiking.
 - Mountain Bike, ATV, paintball or other active sports.
 - Fishing on the small pond.
 - Kayaking on large pond.
- Denton PARD would want to seek a partnership with USACE such as a lease, license agreement, access easement, etc.. for direct access to USACE property to expand the park. This area will be maintained by the City of Denton.



Trail Connectivity

The City of Denton has identified trails, preservation of trees, and open space as high priorities for the Parks and Recreation Department.

Denton's Park, Recreation, and Trails Master Plan has identified 200+ miles of proposed trails and over 100+ miles of paddling trails.

- Denton is expanding its trail system by using utility easements, creeks, expansion of existing sidewalks, and by working with future developments. This process will be in phases, but Denton has initiated the vision and “road-map” to provide connectivity throughout the City and to and from Lewisville Lake.
- The City of Denton is leading the Lewisville Lake Paddling Trail Project by collaborating with lake-front communities for a common vision of providing those trails throughout Lewisville Lake. Denton has identified potential launch locations at Cooper Creek, Pecan Creek, Hickory Creek, and the Greenbelt Elm Fork.

Cooper Creek Trail System

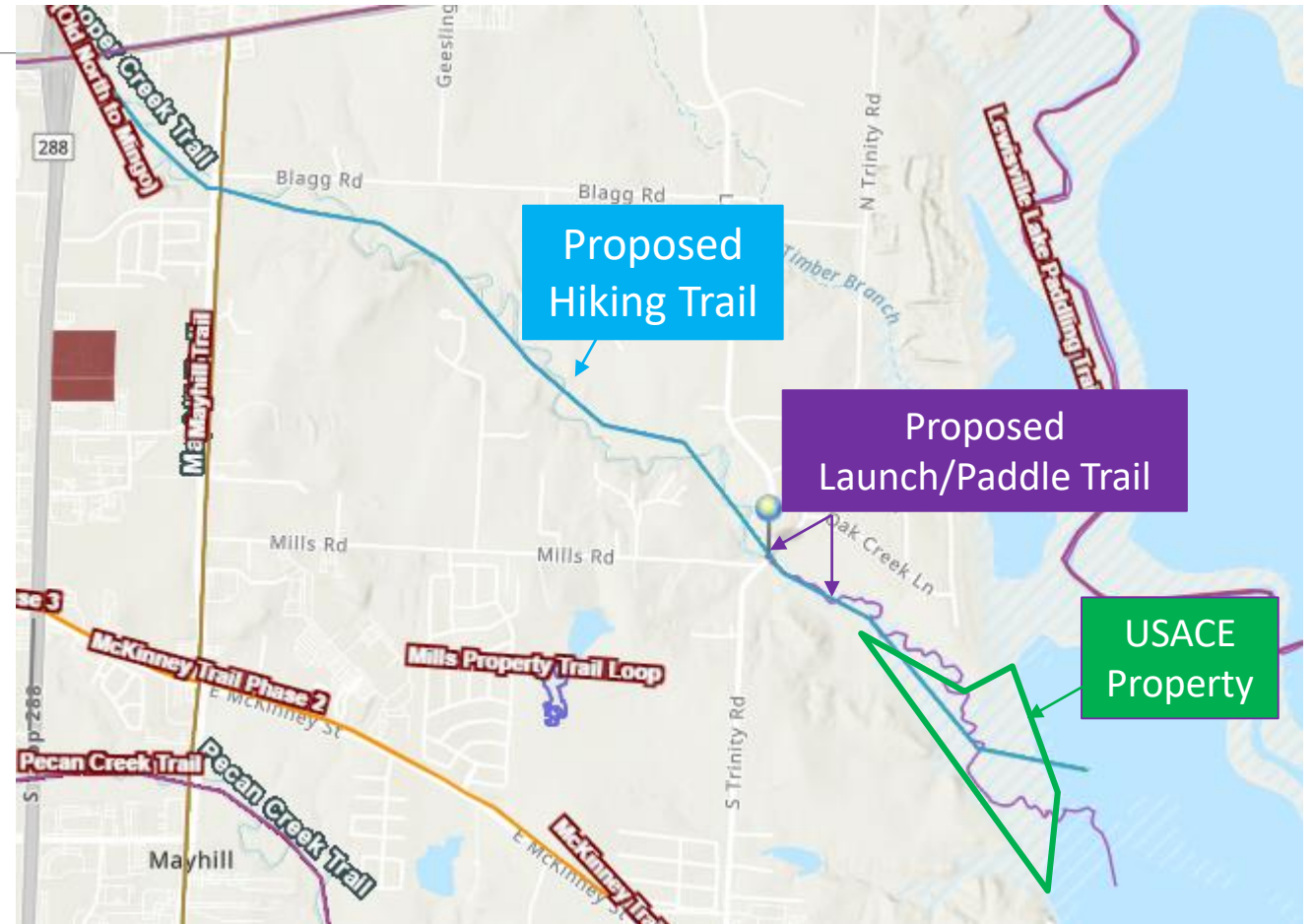
The City of Denton has a proposed a linear trail that follows Cooper Creek. The starting point is from UNT Discovery Park and providing connection towards the lake.

Denton has also identified a potential kayak launch location for the Lewisville Lake Paddling Trail Program.

- Mills/Lakeview Rd. - Property owned by the City of Denton within the creek.

Denton PARD would want to seek a partnership with USACE such as a lease, license, access easement, etc.. for allowance of the trail. This area will be maintained by the City of Denton.

- Soft Surface, Concrete depending on location.



Pecan Creek Trail System

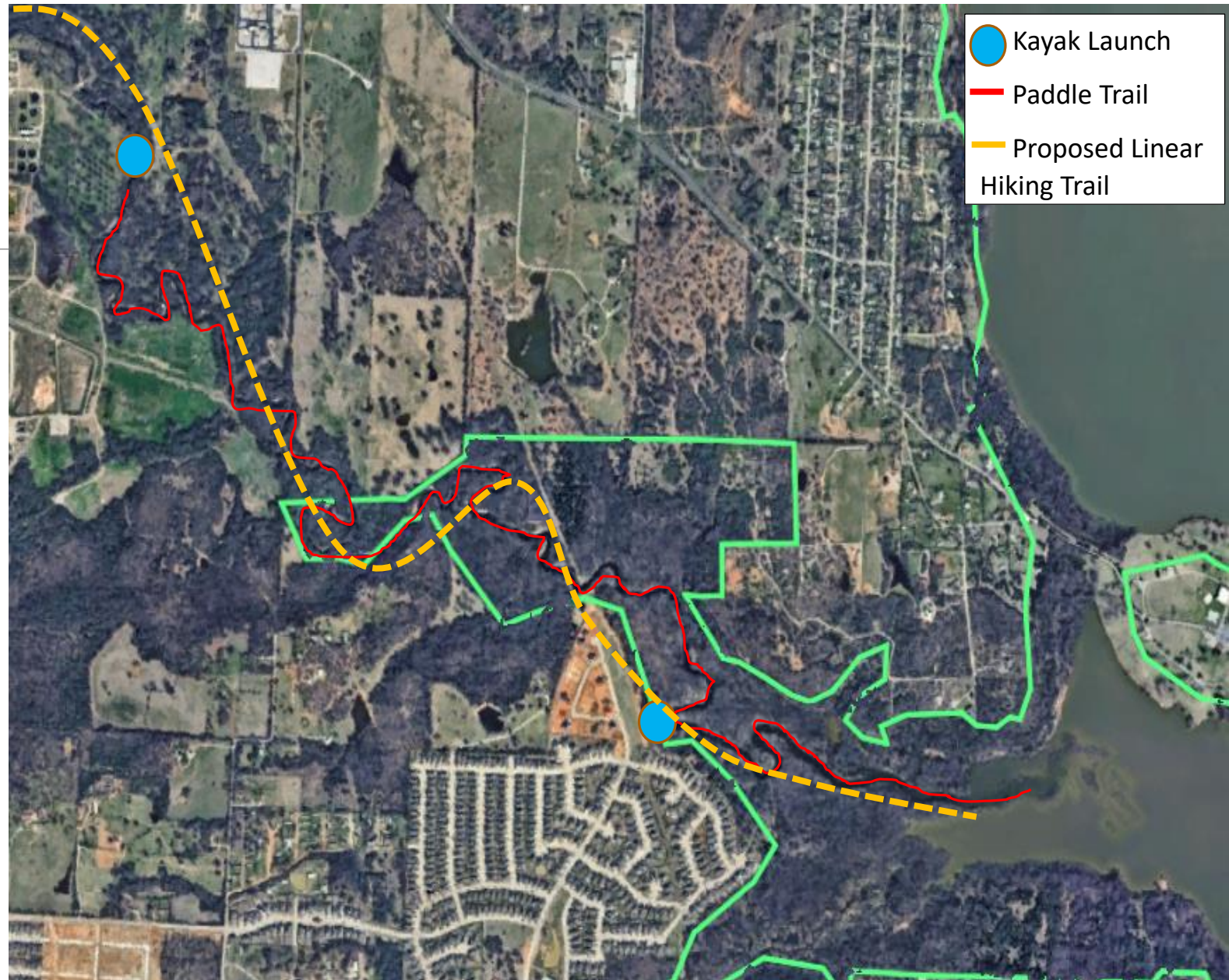
The City of Denton has a proposed future linear trail that follows Pecan Creek. The starting point is from Fred Moore Park and providing connection towards the lake.

Denton has also identified two potential kayak launch locations for the Lewisville Lake Paddling Trail Program.

- Pecan Creek Preserve. (Currently in communication with the HOA on receiving land within the creek.)
- Property owned by the City of Denton within the creek.

Denton PARD would want to seek a partnership with USACE such as a lease, license, access easement, etc.. for allowance of the trail. This area will be maintained by the City of Denton.

- Soft Surface, Concrete depending on location.



Hickory Creek/ Old Alton Trail

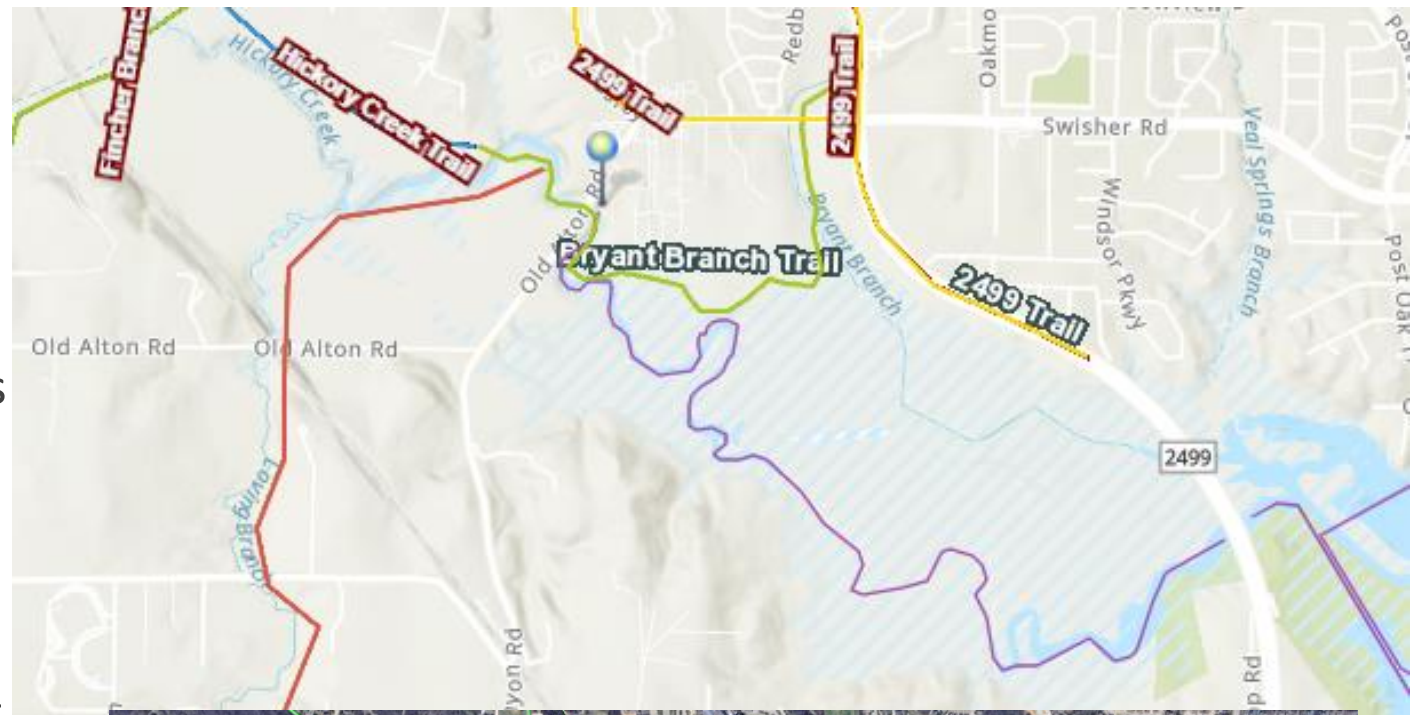
The City of Denton has a proposed linear trail that follows Hickory Creek. The starting point is from Old Alton Bridge with connection East towards 2499, and West/North following the easements and creek to 380/University Dr.

Denton has also identified a potential kayak launch location for the Lewisville Lake Paddling Trail Program.

- Old Alton Launch.

Denton PARD would want to seek a partnership with USACE such as a lease, license, access easement, etc.. for allowance of the trail. This area will be maintained by the City of Denton.

- Soft Surface, Concrete depending on location.



Lewisville Lake Paddling Trail Project

The City of Denton is leading the Lewisville Lake Paddling Trail Project by collaborating with lake-front communities for a common vision of providing those trails throughout Lewisville Lake.

An MOU has been provided to all partnering agencies. The MOU currently lists the USACE as a partner due to the Army Corps Properties below. Mainly the LLPT program would want permission to have access to the following launch points.

- 380 Greenbelt South Access
- Fishtrap & Brewer Rd Launch
- Big Sandy Park Launch
- Doe Branch Launch
- Westlake Park Launch
- King Road Launch

The LLPT Collaboration group is finalizing the safety manual, signage, launch sites and related information. This will be provided to USACE at the same time it will be submitted to Texas Parks and Wildlife to apply for the Texas State Paddling Trail program.

Concerns or Challenges

- Future maintenance of Old Alton bridge area
- USACE concern about increase access to land for general recreational purposes reduces hunting opportunities
 - Solution – Other hunting locations?
 - Ratio of hunters using the property compared to potential recreational uses?

Opportunities

- Denton has support to expand trails and open space as one of the highest priorities in the Parks, Recreation and Trails System Master Plan
 - USACE has underutilized property
 - Expand lease or use agreements
- Denton wants to reopen the LRR Outlook
 - USACE is looking for a location for an office on property.
- Denton has resources in town to help with ongoing maintenance
 - USACE is not located within Denton at this time