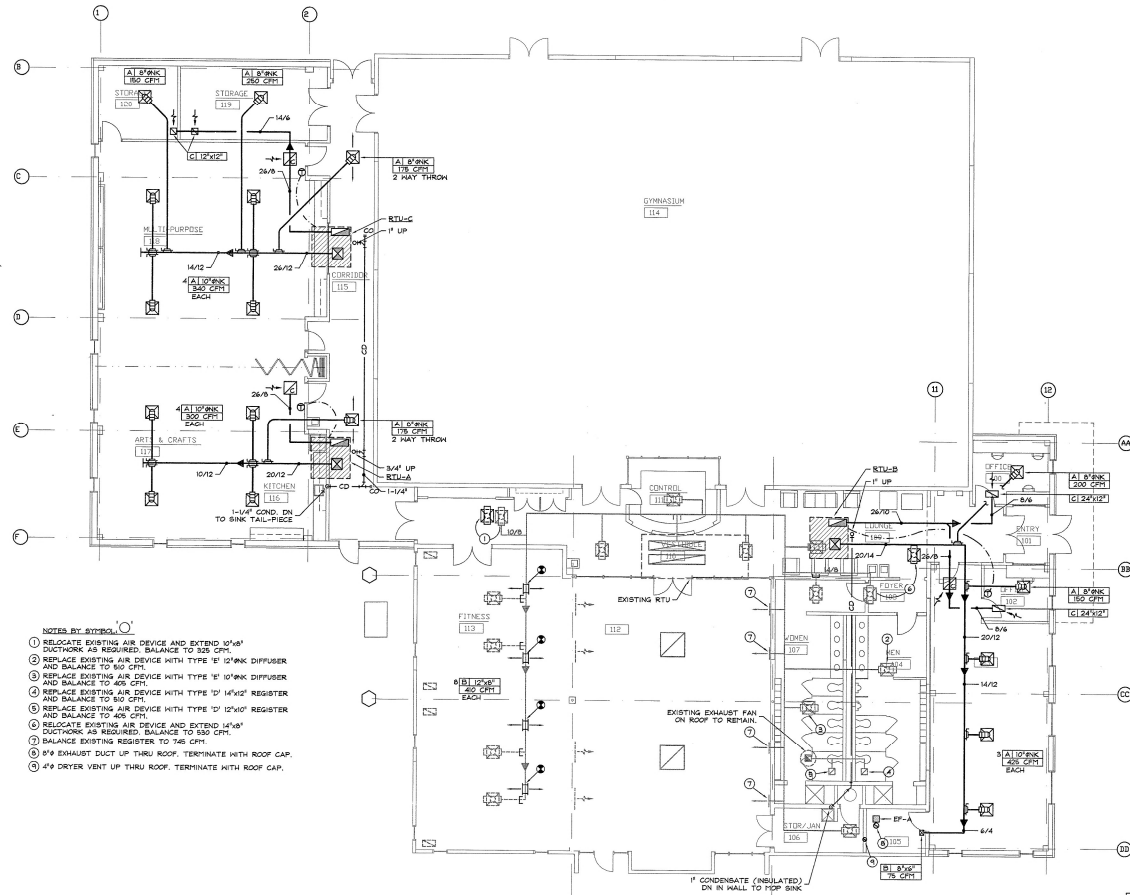


02 ALTERNATE #1 - NORTH LAKE - MECHANICAL  
SCALE: 1/8" = 1'-0"



- NOTES BY SYMBOL:
- 1 RELOCATE EXISTING AIR DEVICE AND EXTEND 32\"/>
  - 2 REPLACE EXISTING AIR DEVICE WITH TYPE 'E' 12\"/>
  - 3 REPLACE EXISTING AIR DEVICE WITH TYPE 'E' 10\"/>
  - 4 REPLACE EXISTING AIR DEVICE WITH TYPE 'D' 14\"/>
  - 5 REPLACE EXISTING AIR DEVICE WITH TYPE 'D' 12\"/>
  - 6 RELOCATE EXISTING AIR DEVICE AND EXTEND 14\"/>
  - 7 BALANCE EXISTING REGISTERS TO 145 CFM.
  - 8 8\"/>
  - 9 4\"/>

01 FLOOR PLAN - NORTH LAKE - MECHANICAL  
SCALE: 1/8" = 1'-0"

PLAN NORTH DENIA NORTH LAKES



STA # 5116  
S. Toth & Associates, Inc.  
Surveying Engineers / Architects / Planners  
21001 Highway 2508, Dallas, Texas 75244  
877-555-1002

ISSUES

REVISIONS

NO.	DESCRIPTION

**CITY OF DENTON**  
DENIA & NORTH LAKES  
RECREATION CENTER EXPANSIONS



FLOOR PLAN  
MECHANICAL

Job	980066.00
Date	06 OCT #8
Drawn	WEM
Check	ESS
Sheet	M2