

- Door Schedule**
- 1 3068 Alum. Glass Tempered Bronze
 - 2 6068 Alum. Glass Tempered Bronze
 - 3 3068 Solid Core Mahogany
 - 4 1668 Solid Core Mahogany
 - 5 2680 Swivel Counter Door

- Window Schedule**
- A 4'-0" x 6'-0" Pass-Through Window BR GL Temp.
 - B (4) 2'-6" x 6'-0" Fixed Lites BR GL Temp.
 - C (5) 2'-6" x 6'-0" Fixed Lites BR GL Temp.
 - D (2) 2'-6" x 6'-0" Fixed Lites BR GL Temp.
 - E (4) 3'-0" x 5'-0" Fixed Lites BR GL Temp.

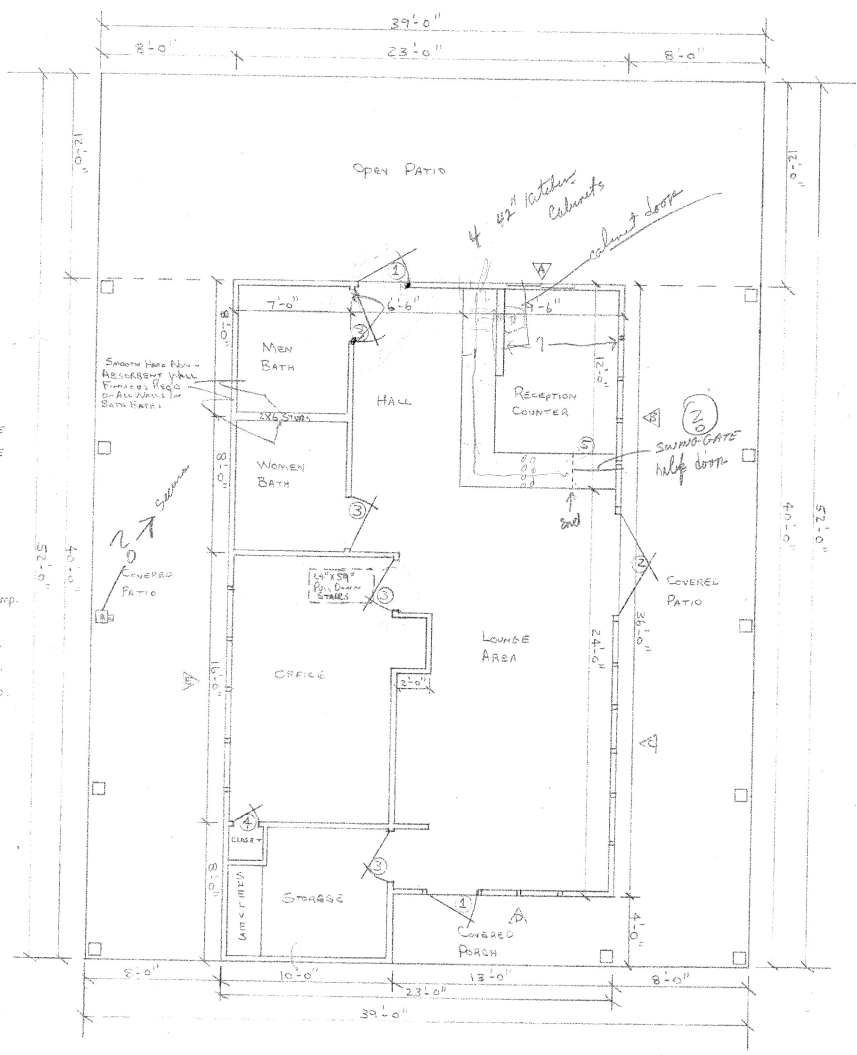
Door Specs

All exterior doors to be Amerlite Model 72X with 1/2" x 1/2" glass. Single doors to have Jackson 500 type panic device. Double doors to have Jackson 5000 panic device. All doors to have 1" thickness. Framing around doors to be Amerlite 20000 type framing. Finish on doors and frames to be available 1800 Dark Bronze. Glass to be 1/4" thick bronze tempered.

Window Specs

Pass-through window to be Better Built Series 65 X2 Series finish to be dark bronze. Picture windows to be Better Built Self-Mulm type. Frames to be dark bronze. All glass to be 1/4" thick bronze tempered.

All framing, beams & spars shall comply with Code UBC Use Grade Machine Material with E-18-10 Sp-3



FLOOR DETAILS

