

DOG PARK RESEARCH

Quick Facts

- 37 Dog Parks
- 28 Municipalities
- Dog Parks Built Between 2004 — 2018
- Average Size = 3.32 Acres

Top 5 Recommendations

- 3 Fields (1 to rotate out)
- Shaded Area
- Water Fountain
- Benches
- Adequate Parking

TOTAL		TOTAL <i>Compounded (Inflation 4.2% yr)</i>	
Mean	Median	Mean	Median
\$519,777	\$327,500	\$619,509	\$432,392

Summary					Today's Cost <i>Compounded (Inflation 4.2% yr)</i>	
Acre	parks	Built yrs	Mean	Median	Mean	Median
0 - .99	4	2010 — 2017	\$104,925	\$127,500	\$120,885	\$145,880
1 - 1.99	10	2005 — 2018	\$237,800	\$106,500	\$287,992	\$132,449
2 - 2.99	5	2006 — 2015	\$478,750	\$475,000	\$576,539	\$559,628
3 - 3.99	5	2007 — 2018	\$559,702	\$397,000	\$656,064	\$450,000
4 - 4.99	1	2013	\$300,000	\$300,000	\$368,519	\$368,519
5 +	12	2004 — 2018	\$908,398	\$825,000	\$1,085,570	\$1,055,568

Population: < 74,999 (*) 75,000— 249,999 (**) 250,000 + (***)

Municipality	Acre	Play Areas	Built	Cost	Today's Cost <i>Compounded (Inflation 4.2% yr)</i>
Addison *	0.5	2	2010	\$125,000	\$173,721
Addison *	0.5	2	2017	\$150,000	\$156,300
Keller *	0.9	2	2017	\$130,000	\$135,460
Mesquite **	0.7	2	2013	\$14,700	\$18,057
Bedford *	1.2	2	2013	\$150,000	\$184,259
Carrollton **	1	2	2016	\$325,000	\$352,873
Dallas ***	1.2	1	2005	\$350,000	\$597,514
Dallas ***	1.5	2	in works	\$1,100,000	\$1,100,000
Gainesville *	1.73	2	2016	\$45,000	\$48,859
Highland Village *	1.5	2	2017	\$275,000	\$286,550
Lancaster *	1	2	2015	\$5,000	\$5,657
Rowlett *	1.5	2	2018	\$40,000	\$40,000
Waxahachie *	1	2	2008	\$25,000	\$37,724
White Settlement *	1.5	2	2012	\$63,000	\$80,639
Denton (Wiggly) **	2.75	3	2006		\$559,628#
Irving **	2.5	4	2010	\$350,000	\$486,418
McKinney **	2	2	2013	\$600,000	\$737,038
Plano ***	2	2	2015	\$800,000	\$905,093
Weatherford *	2.75	2	2014	\$165,000	\$194,516
Carrollton **	3.7	3	2018	\$450,000	\$450,000
Dallas ***	3	3	2015	\$1,500,000	\$1,697,049
Eules *	3	2	2008	\$121,509	\$183,352
Grand Prairie **	3	3	2007	\$330,000	\$518,870
The Colony *	3.8	2	2016	\$397,000	\$431,048
Coppell *	4	2	2013	\$300,000	\$368,519
Arlington ***	5.3	3	2017	\$737,800	\$768,788
Arlington ***	5.7	3	2007	\$263,000	\$413,524
Dallas ***	7	3	2010	\$1,700,000	\$2,362,603
Dallas ***	5	2	2013	\$850,000	\$1,044,137
Flower Mound **	5	3	2016	\$1,000,000	\$1,085,764
Fort Worth ***	10	2	2016	\$1,500,000	\$1,626,000
Fort Worth ***	5	2	2004	\$109,000	\$193,899
Frisco **	5	3	2011	\$610,970	\$814,880
North Richland Hills *	5	5	2006	\$230,000	\$376,826
Plano ***	8.5	3	2018	\$1,800,000	\$1,800,000
Richardson **	5	4	2015	\$1,300,000	\$1,470,776
Trophy Club *	8	3	2011	\$800,000	\$1,066,999

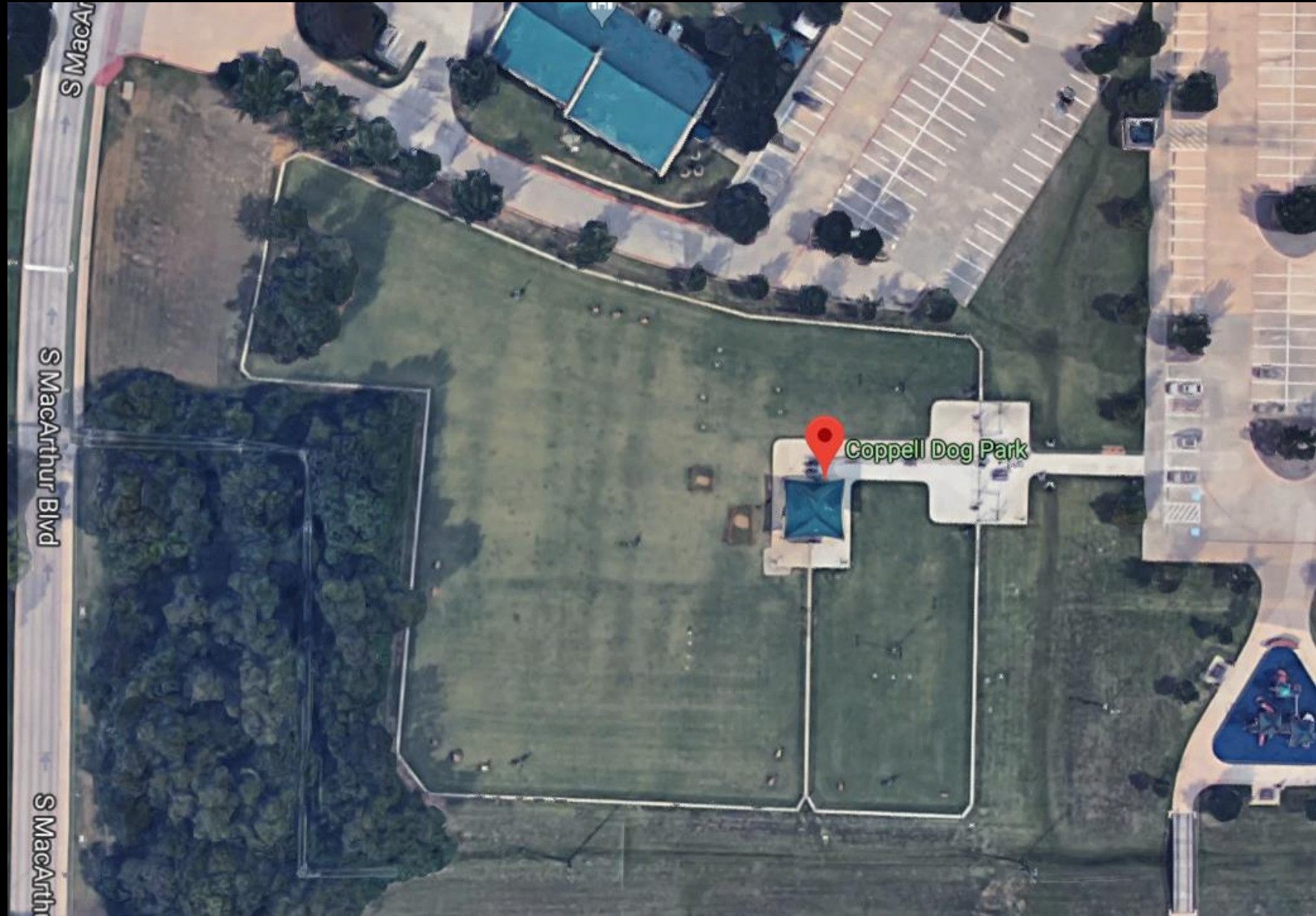
- Actual projected cost

DOG PARK
Satellite Inventory
October 2018

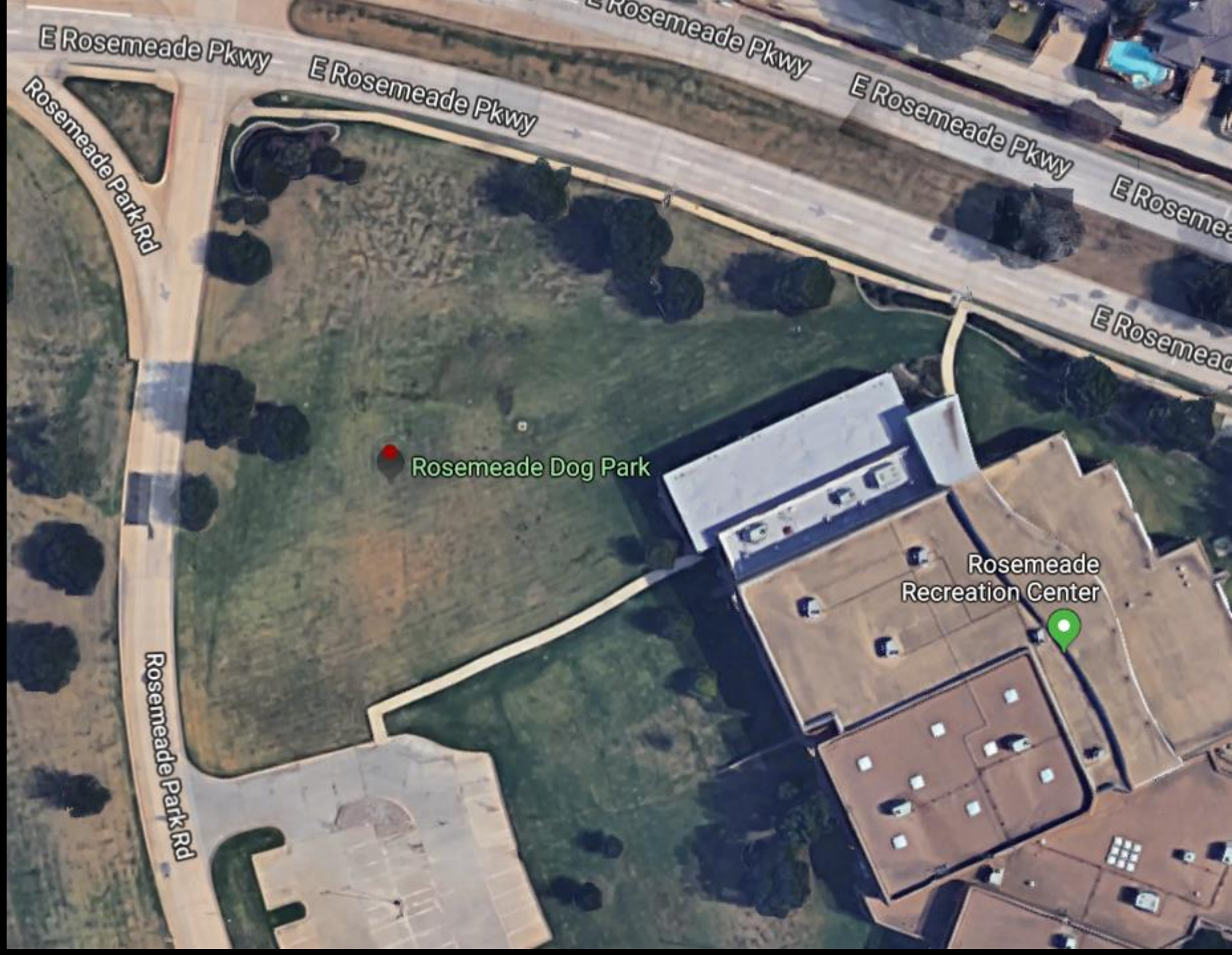
Addison
Redding Trail
Dog Park
.5 acres



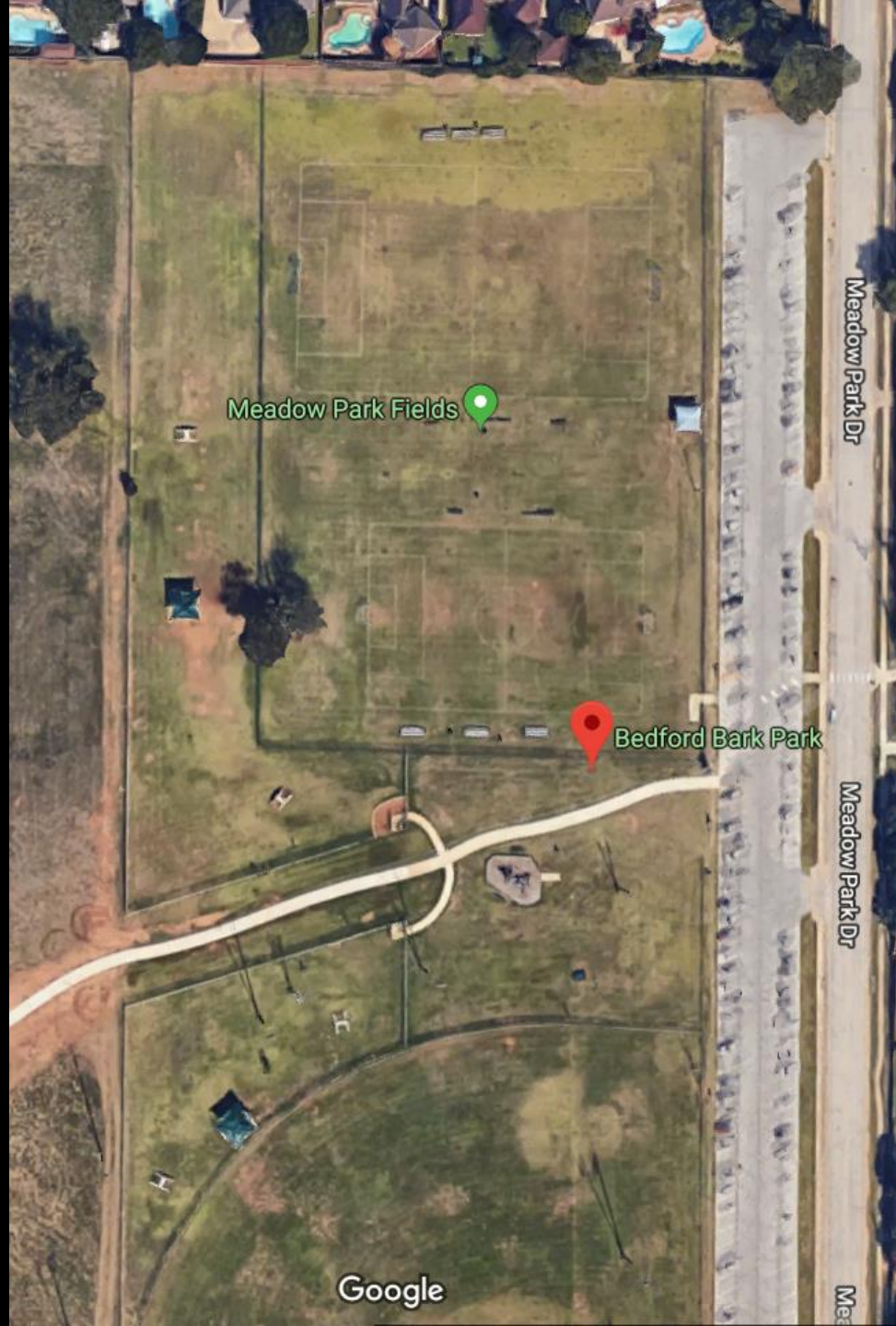
Coppell
Waggin Tails
Dog Park
4 acres



**Carrollton
Rosemeade
Dog Park
1 acre**



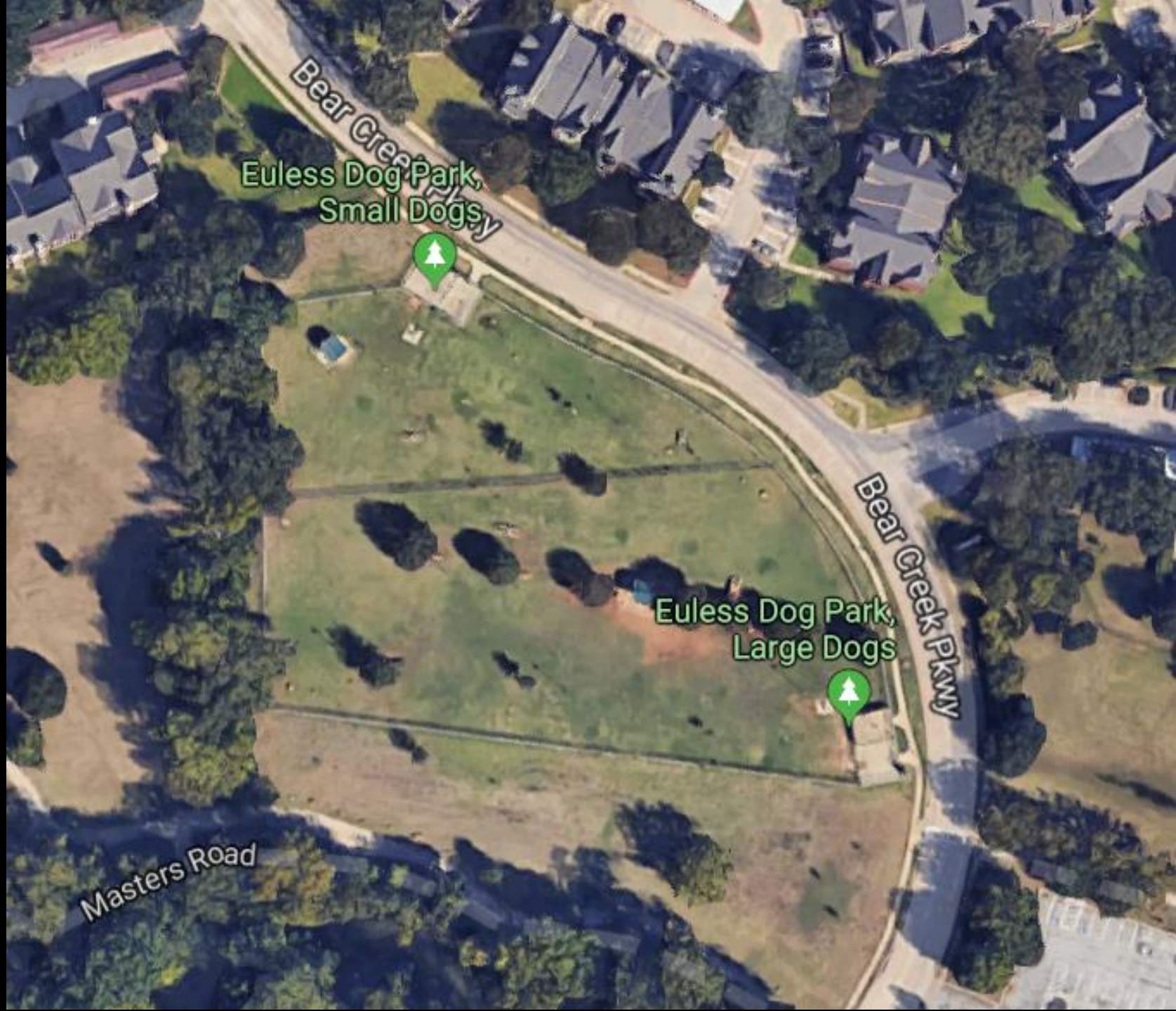
Bedford
Bark Park
Dog Park
1.2 acres



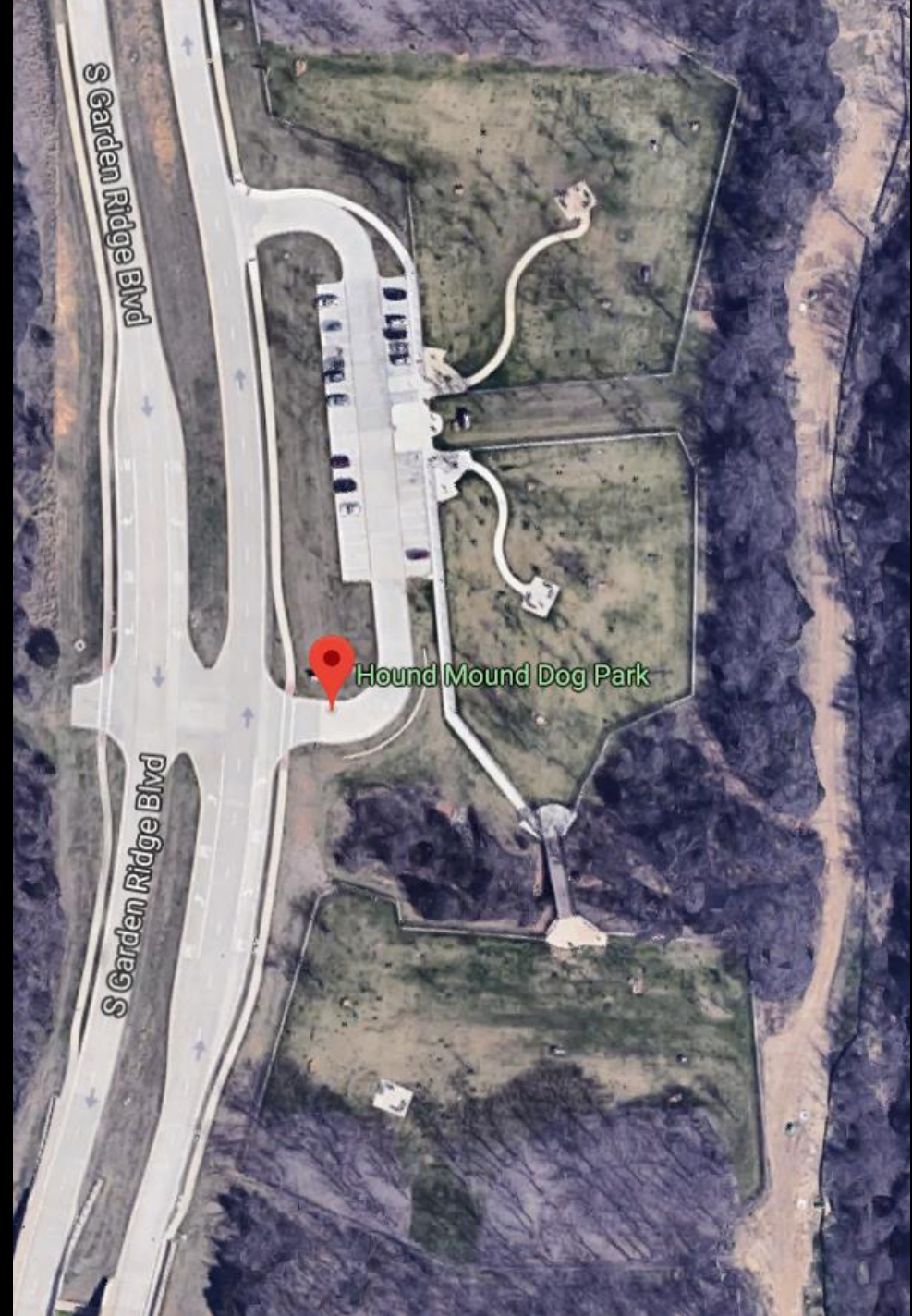
Denton
Wiggly Field
Dog Park
2.75 acres



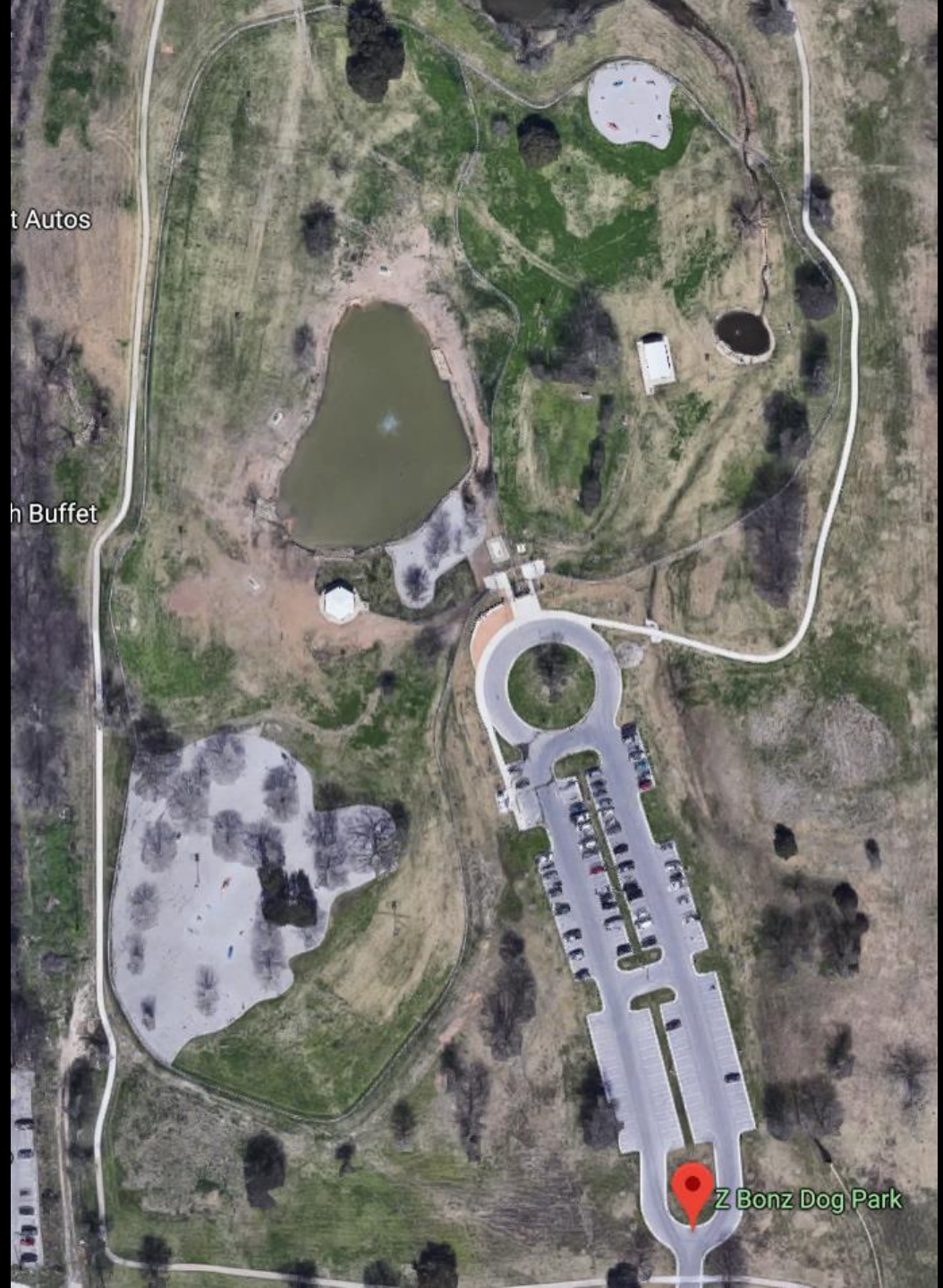
**Eules
Dog Park at the
Villages of
Bear Creek
3 acres**



Flower Mound
Hound Mound
Dog Park
5 acres



Fort Worth
Z Bonz
Dog Park
10 acres



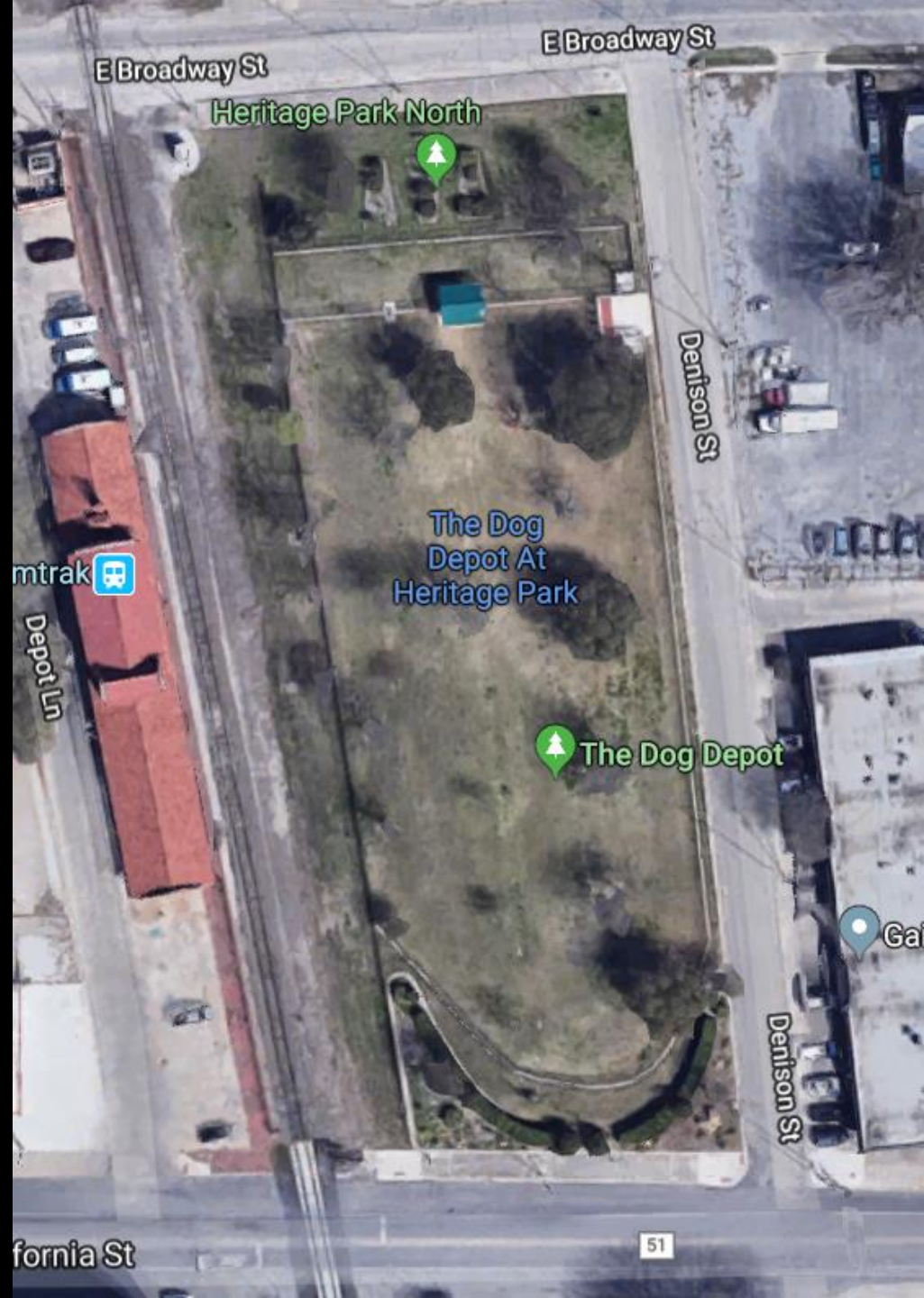
Fort Worth
Fort Woof
Dog Park
5 acres



Frisco
Ruff Range
Dog Park
5 acres



Gainesville
The Dog Depot
Dog Park
1.73 acres



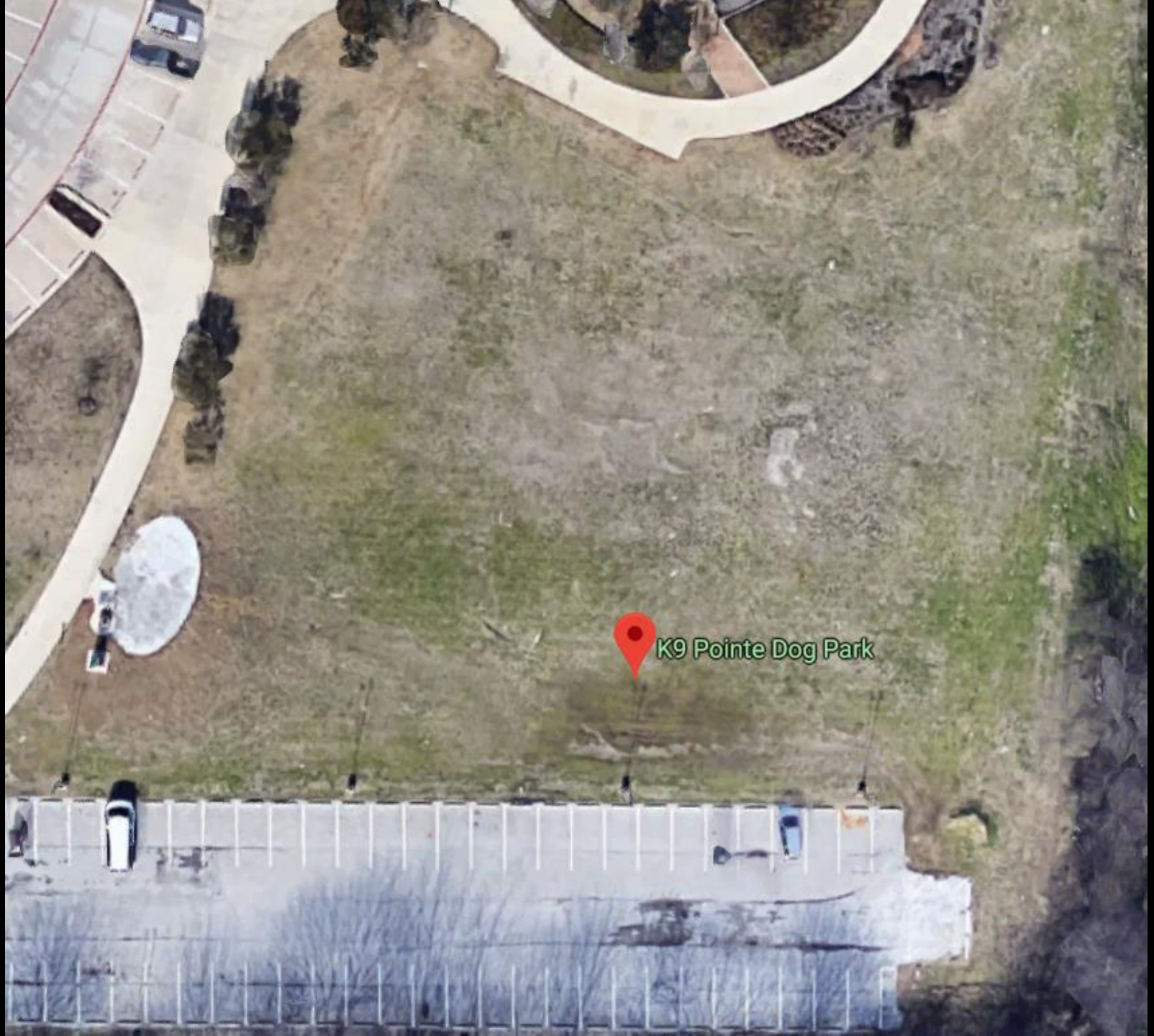
Irving
Dog Park
2.5 acres



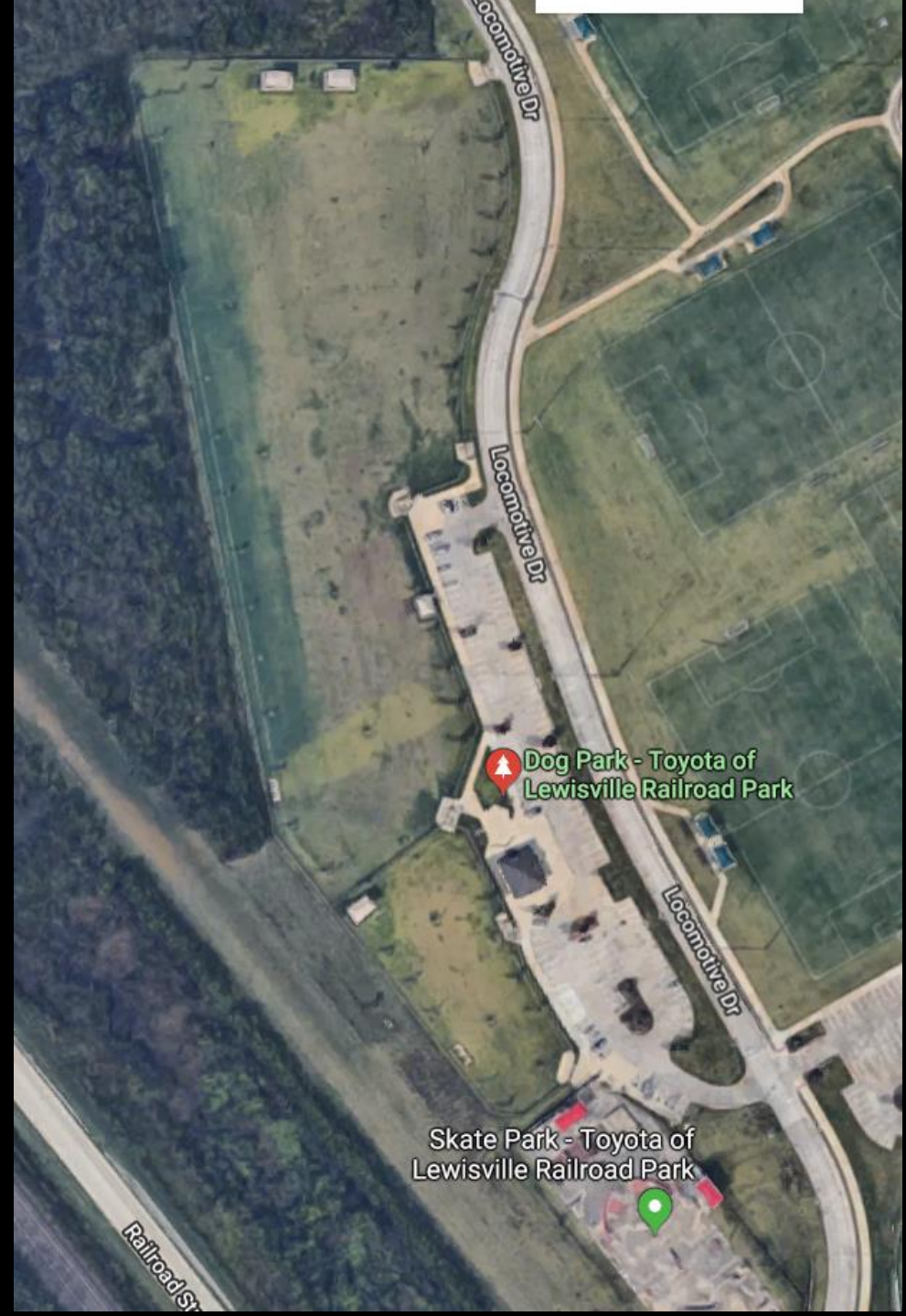
Arlington
Tails N Trails
Dog Park
5.7 acres



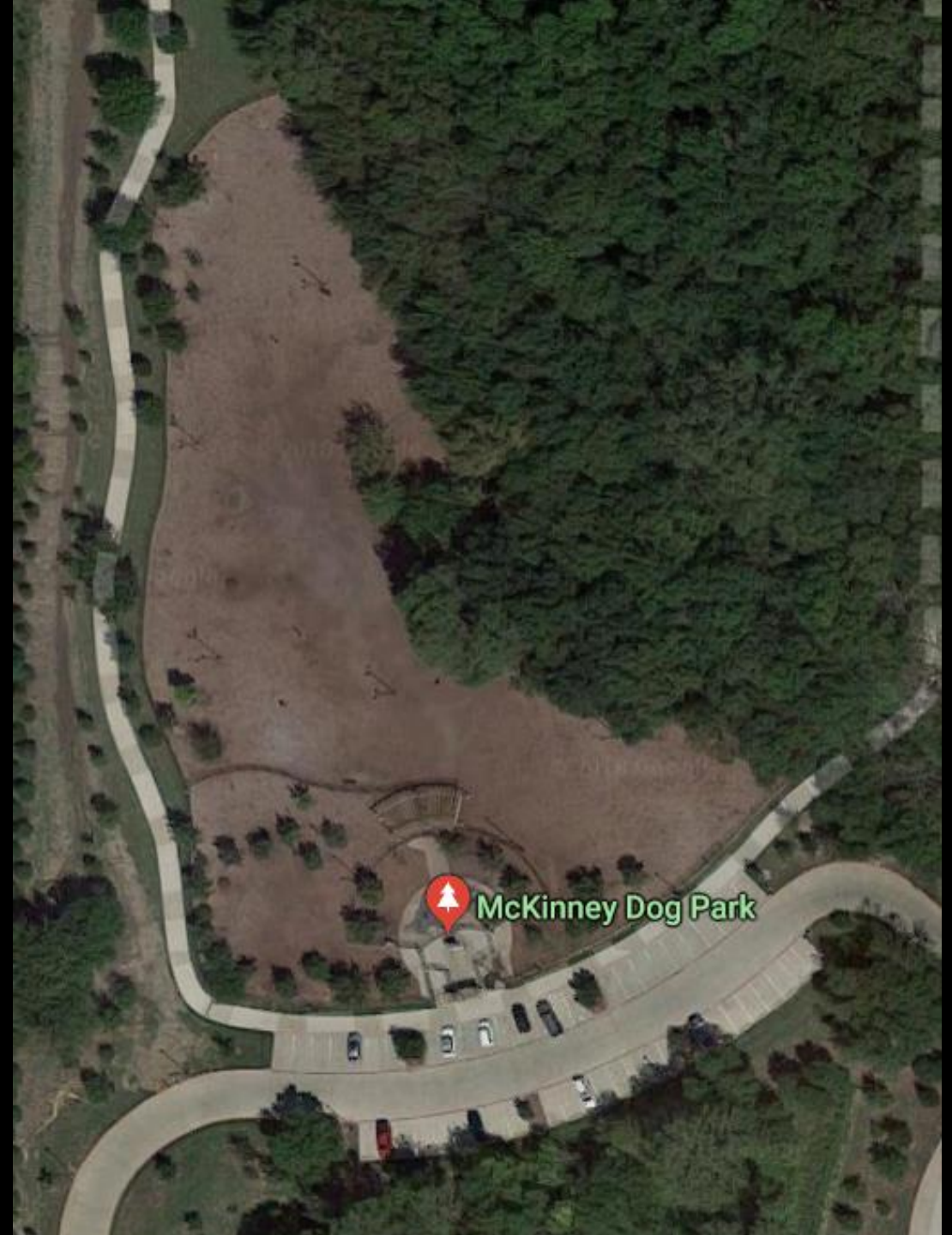
**Keller
K-9 Pointe
Dog Park
.9 acres**



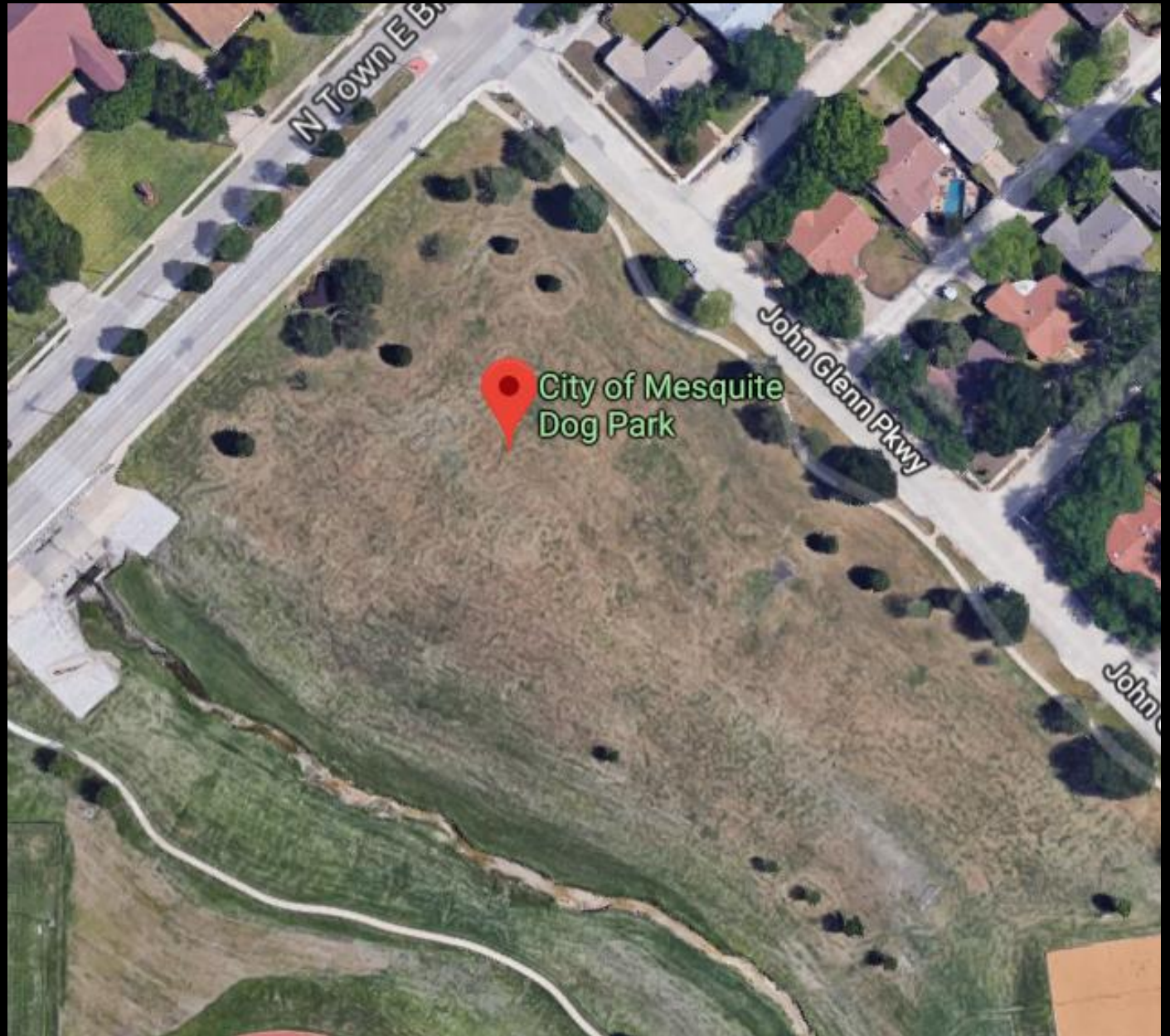
Lewisville
Toyota of
Lewisville
Railroad Park
6 acres



McKinney
Bonnie Wenk
Park
2 acres



Mesquite
Dog Park
.7 acres



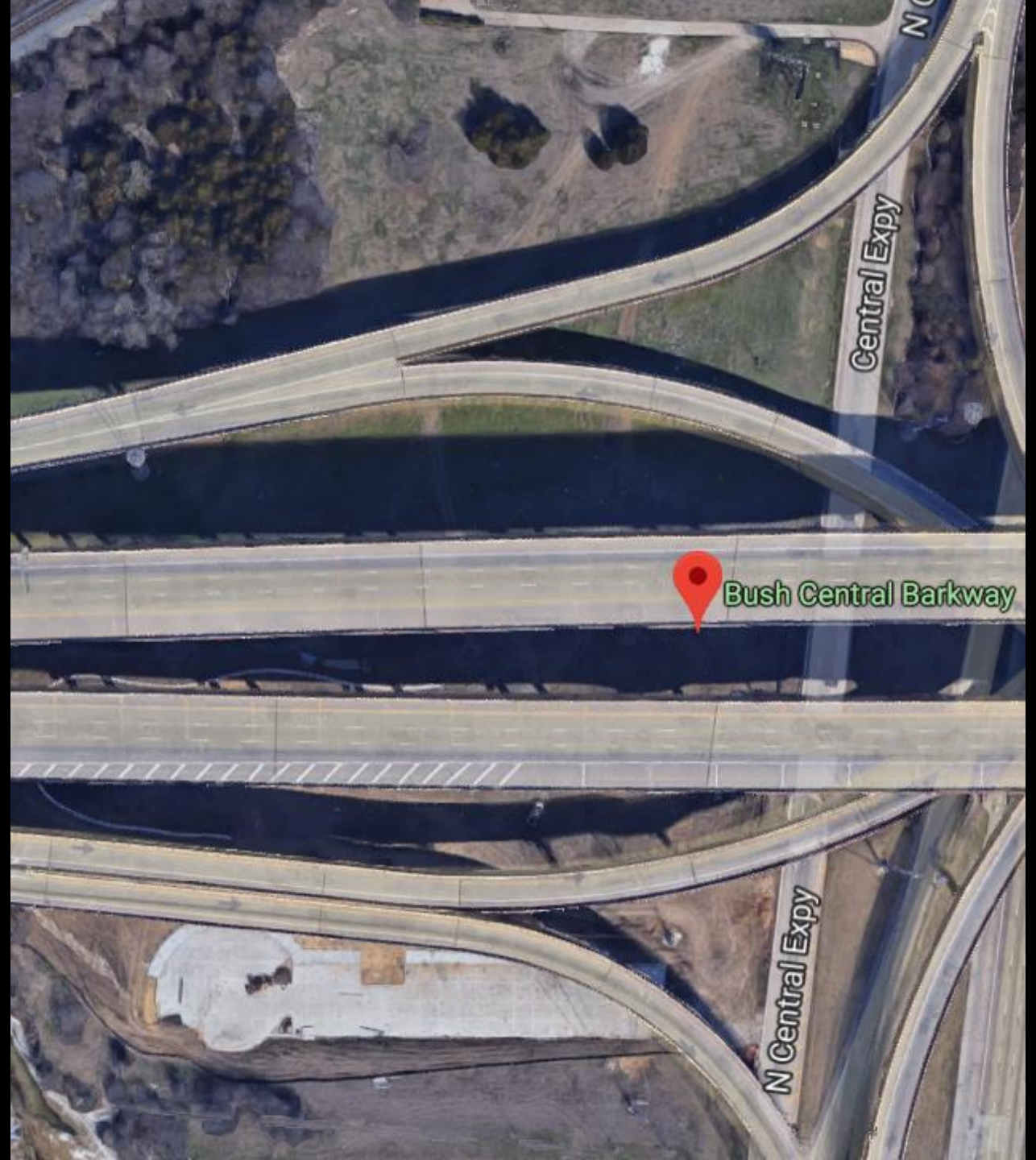
N Richland
Hills
Tipps Canine
Dog Park
5 acres



Plano
Bob Woodruff
Dog Park
8.5 acres



Richardson
Bush Central
Barkway
Dog Park
5 acres



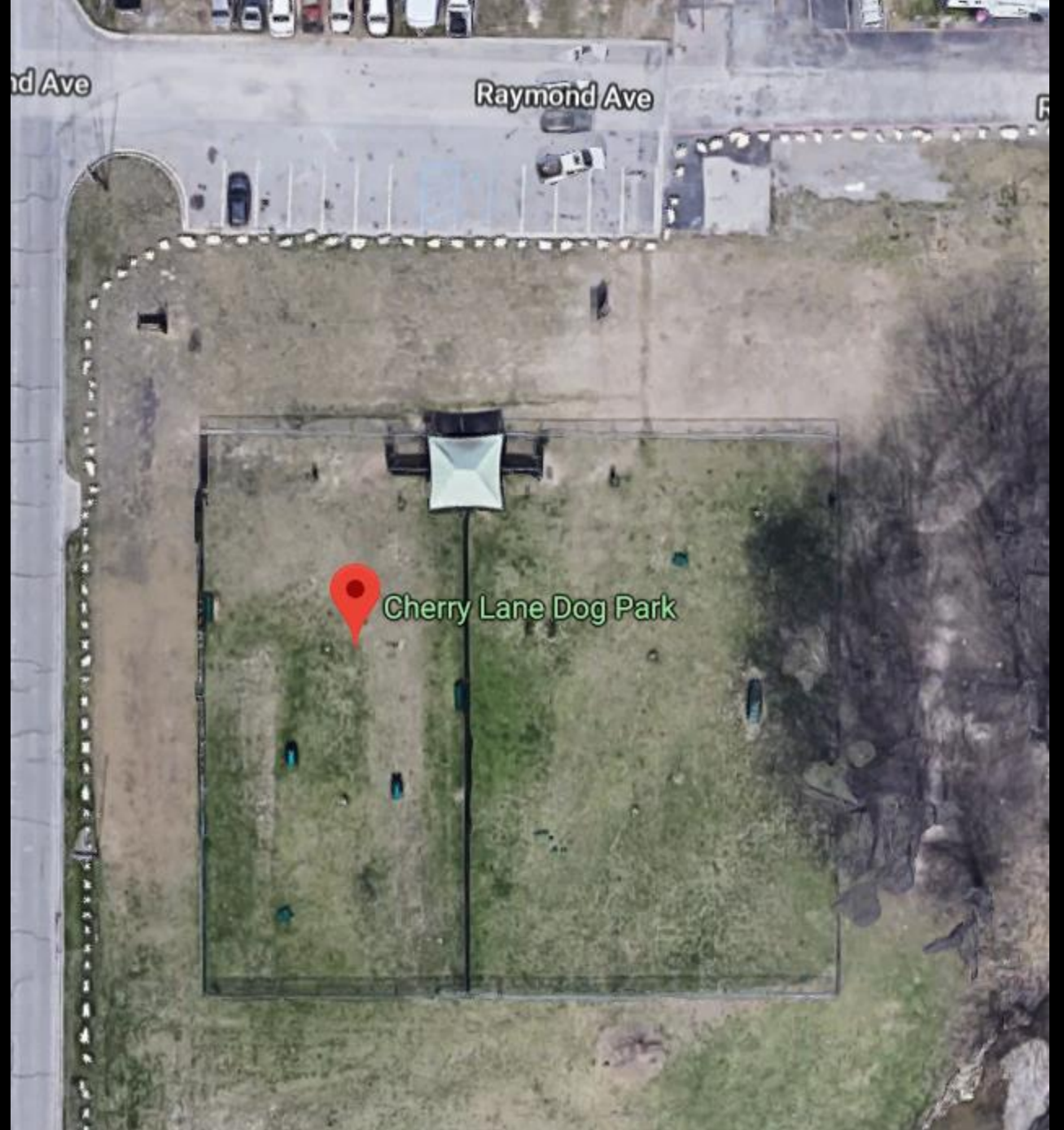
Trophy Club
Freedom
Dog Park
8 acres



Rockwall
Harry Myers
Dog Park
.5 acres



White
Settlement
Cherry Lane
Dog Park
1.5 acres



Southlake
Boo Boo's
Buddies
Dog Park
? acres

